

[About Us](#)[Events/Minisites](#)[RSS](#)[Newsroom](#)[Press Release](#)[Media Coverage](#)[Multimedia Center](#)[About Huawei
Enterprise](#)[Contact Us](#)[Branch](#)[Publications](#)

Huawei Cloud Storage Passed the Performance Tests of CERN



Geneva, 10 July, 2012 – Huawei, a leading global information and communications technology (ICT) solutions provider, today announced that its cloud storage system has passed the performance test of the European Organization for Nuclear Research (CERN).

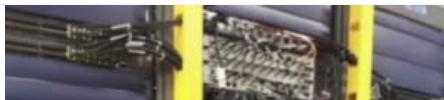
CERN (the European Organization for Nuclear Research) is the world's largest particle physics laboratory. The CERN data centre, also known as the Worldwide LHC Computing Grid (WLCG) Tier-0, is at the core of a global computing resource which enables the storage and analysis of more than 20 PB of Large Hadron Collider (LHC) data per year.

CERN openlab was created to develop innovative and advanced IT systems to be used by the LHC community through bringing together the efforts of science and industry. The scalability of the storage system is important for CERN as the laboratory faces the ever increasing demands of its physics users. The massive data growth prompts CERN to evaluate new storage technologies. Huawei, with industry-leading storage experts and a significant technical experience, is committed to the development of innovative storage solutions in the field of next-generation cloud storage. By joining CERN openlab as a contributing member, Huawei focuses on investigating the applicability of new storage techniques and architectures to the processing of high energy physics data from the LHC experiments.

In early 2012, Huawei's cloud storage system was delivered to the CERN site, and in three months, the installation and benchmark performance evaluation were completed. Huawei's cloud storage proved to show excellent data writing and reading performance in large-scale data environments, with horizontal scalability. The system also provides a self-healing intelligent maintenance, which significantly reduces maintenance costs, and effectively enhances the storage system's availability and reliability. The test validation results demonstrate this innovative hardware and software architecture complies with the mass storage requirements.

"CERN is hitting the technology limits for resource-intensive simulations and analysis. Our collaboration with Huawei shows an exciting new approach, where their novel architecture extends the capabilities in preparation for the Exascale data rates and volumes we expect in the future." said Bob Jones, head of CERN openlab.

"Establishing the link with CERN openlab gave us a fantastic opportunity to further develop our cloud storage products, and proved their worth in the extreme scientific research and mass data environment." James Hughes, Chief Architect of Cloud Storage, Huawei stated.



Products & Solutions

All Products
All Solutions
Virtual Exhibition

Support

Submit Service Request
Local Support Center
Security Capability Center

How to Buy

Contact Reseller
Post Your Requirements

Become a Partner

Become a Partner
Register for Partner
Qualification

Participate in Training

Certificate Query
Authorized Learning
Partner Query
Huawei Academy Online

Links

Publications
Newsletter
RSS

Related Sites

Huawei Carrier Network
Huawei Device
Huawei Marine

Terms of Use

By accessing, browsing, or using this website, you acknowledge that you have read, understood, and agreed to be bound by these terms and applicable laws and regulations. Details
Privacy Policy
Read about our online information practices, including how we collect and use your personal information. Details

Contact Us

China Asia Pacific
Commonwealth of Independent States
Europe Latin America
Middle East & North Africa
North America Sub-Saharan Africa

OpenLab recently celebrated its 10th anniversary and entered its fourth phase. In May 2012, with more intense cross-partner activities and new projects in the domains of automation and controls, databases, networking and platforms. For more details, visit the CERN openlab website: www.cern.ch/openlab

Contact Local TAC

About Huawei Enterprise

Huawei Enterprise Business Group ("Huawei Enterprise") is one of Huawei's three businesses groups (BGs). Leveraged by its strong R&D capabilities and comprehensive technical expertise, Huawei Enterprise provides wide ranging and highly efficient ICT solutions and services. Together with partners, Huawei Enterprise offers solutions for vertical industry and enterprise customers globally including government and public sectors, transportation, power grids, energy, and finance, as well as commercial enterprises in many fields. These innovative and leading solutions cover network infrastructure, UC&C, cloud computing & data center, and industry application solutions.

For more information, please visit <http://enterprise.huawei.com>

Follow us on Twitter: www.twitter.com/huaweiENT

Facebook: <http://www.facebook.com/HuaweiEnterprise>

LinkedIn: www.linkedin.com/groups/Huawei-Enterprise-4070523?home=&gid=4070523

Comments

[I want to rate](#)

Be courteous when commenting.

Submit

No comment for the moment!